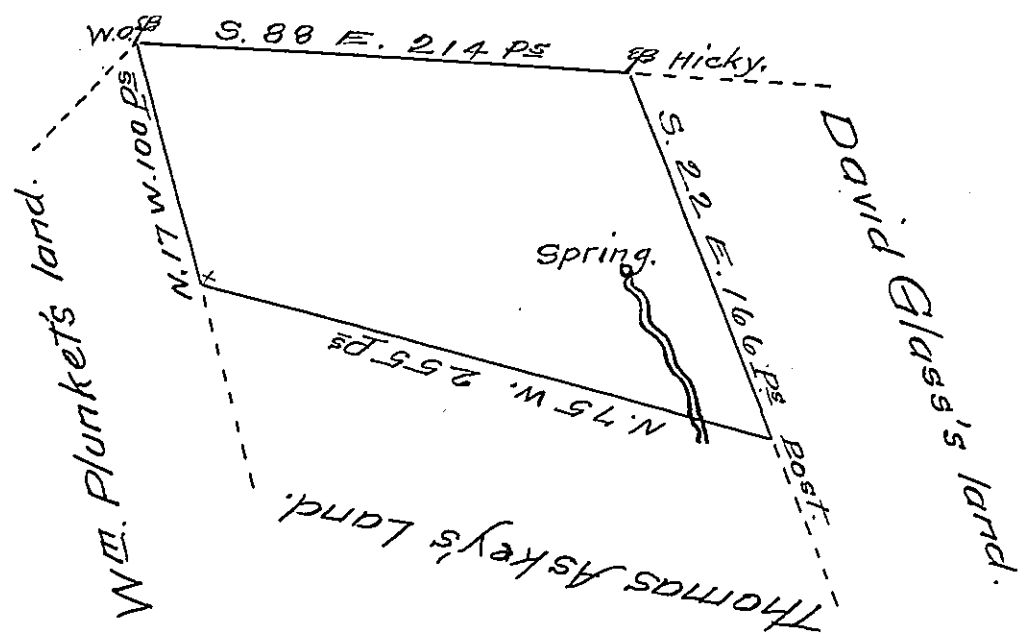


The Widow Beaty's land.



A Draught of a tract of Land situate near Rays-Town Creek In Bedford Settlement in the County of Cumberland Containing one hundred & fifty nine acres & a half and the allowance of six Per Cent for-roads &c. Surveyed the sixth day of January-1766 To Frederick Snyder In pursuance of a war-rant dated the tenth day of July 1765.

To John Lukens Esq^r.
Survey^r. Gen^l.

Richard Tea
Dep^y. Survey^r.

As the original of this ^{is} much torn the Surveyor Gen-eral has ordered this copy to be made & folded round the original.

IN TESTIMONY that the above is a copy of the original remaining on file in the Department of Internal Affairs of Pennsylvania, made conformably to an Act of Assembly approved the 16th day of February 1833, I have hereunto set my hand and caused the Seal of said Department to be affixed at Harrisburg, this Twenty fifth day of October 1907.

Henry Howell
Secretary of Internal Affairs.